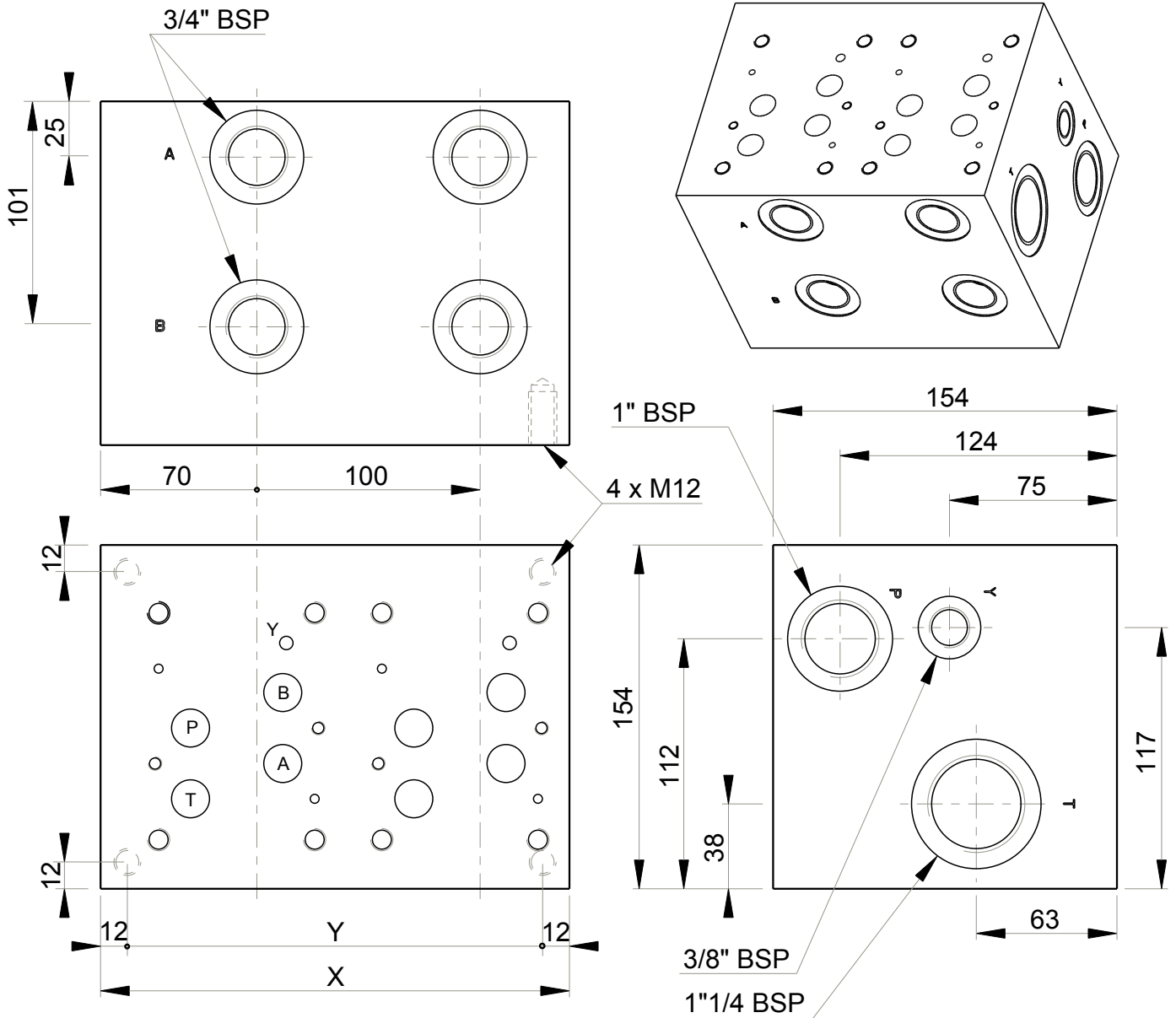
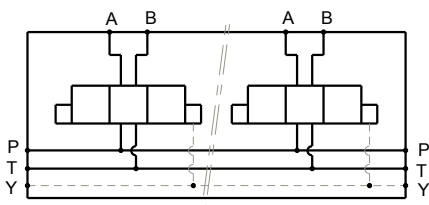


# MR-7\_3/4"



| Stations | X   | Y   | (kg) |
|----------|-----|-----|------|
| 1        | 110 | 86  | 16   |
| 2        | 210 | 186 | 30   |



## Technical specifications

Material : Cast iron EN-GJL-250 \_ Phosphatation  
 Pressure : 250 bar maxi  
 Options : P and/or T not drilled  
 zinc plating  
 pilot line (X) 3/8" BSP

Designation code :

**MR - 7 - \* - 3/4" G**

CETOP 7  
 Side entry

Station number

G : ports BSP

Ports